

Key Performance Indicators for Business Portal

[BENEFITS]

Track what's important to your organization

KPIs enable each business to define the metrics most important to their success, enabling you to keep your finger on the pulse of your business, identify hot spots needing your attention, and act quickly to drive your business forward.

Enable each executive to lead more effectively

The CEO, CFO, VP Sales, and purchasing manager have different sets of metrics. KPIs can be defined for each of them, with Business Portal delivering role-based access to the information they need.

Help deliver at-a-glance access to executive information

Charts, tables, and "green/yellow/red" conditional alerts enable companies to create KPIs that draw attention to the most important aspects of each information view.

Refresh KPIs as often as you want

KPIs can be scheduled to refresh daily, weekly, or as often as you want, so you'll always be working with the latest and best-available information.

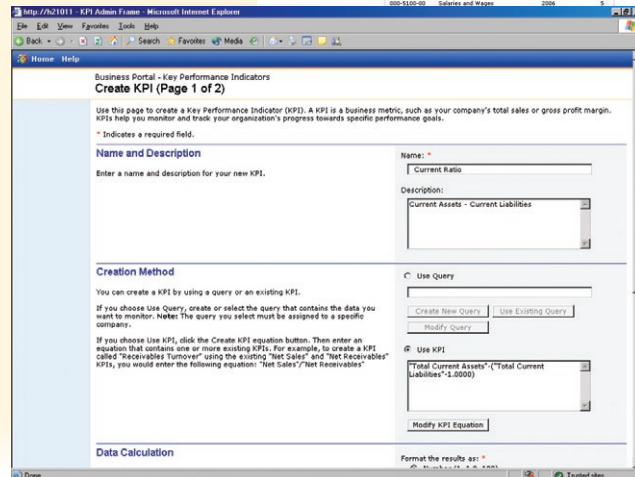
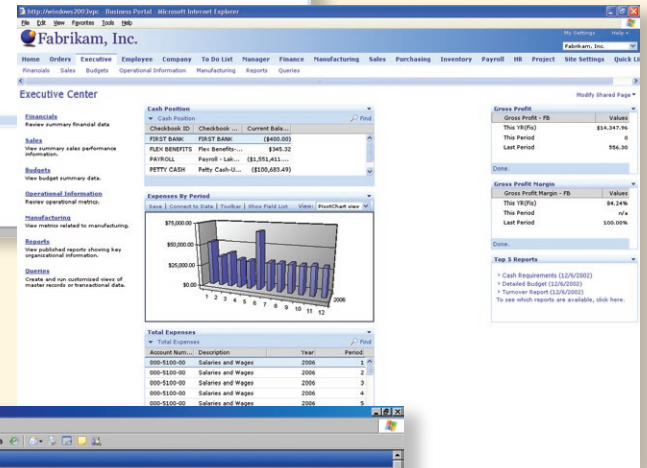
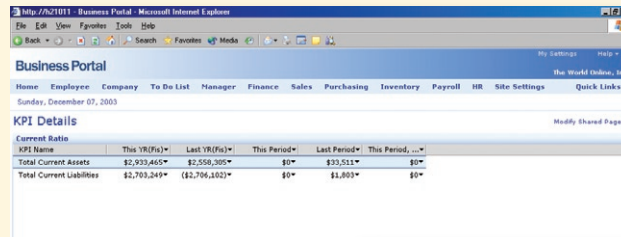
Effortless for the user

Once the KPIs are defined and assigned to Business Portal roles, decision makers throughout the company can easily view and drill down on key business metrics via Web browser. Sample KPIs give you a strong starting point for building and defining your own KPIs.

Executives and decision makers need at-a-glance access to key business metrics so they can quickly assess the health of the business and take command when conditions change. With Key Performance Indicators (KPIs) for Business Portal, companies can define and help deliver instant access to personalized views of key business information via a Web-based portal. Profitability, debt-to-equity, and gross margin are just a few of the KPIs you can create.

DRILL DOWN to underlying KPIs and Queries for more detail.

PROVIDE YOUR ORGANIZATIONS' executives with access to key financial, sales, and operational information to assist in decision making.



EASY-TO-USE KPI DEFINITION WIZARDS take you step-by-step through the process of creating KPIs for your business.

[FEATURES OVERVIEW]

Easy to Define

KPIs are easy to design, from selecting the originating data and calculation type, to choosing the time period and defining alert ranges.

Built on Business Portal

KPIs are built by selecting queries from the Business Portal query function and applying calculations to them (Sum, Min, Max, Average, Count). And, once a KPI has been built, it can be used as the basis for additional KPIs, saving design time.

Multiple View Forms

Select from three different view forms, including bar charts, grids, and alerts, so executives can drill down and drill around to the key information they need.

Alert Ranges

Build KPIs such as ratios and revenue or budget targets, and define alert conditions with green/yellow/red ranges to enable executives to visually identify which indicators demand further attention.

Draws Data from Microsoft Dynamics™ GP

KPIs enable you to help deliver access to data from Microsoft Dynamics GP.

Role-Based Access

Business Portal's role-based environment for helping deliver business information and processes enables companies to define who gets access to which KPIs, putting the right information into the right hands.

Executive Center

Give decision makers deeper visibility into sales, operations, finance, and manufacturing. The Key Performance Indicators module now offers new Business Portal pages that include KPIs, simple charts, and queries that provide fast insight into critical information.

Sample Key Performance Indicators

More than 20 sample KPIs give you a strong starting point for building and defining your own KPIs. Sample KPIs include:

- Gross Profit Margin
- Total Sales
- Gross Profit
- Cost of Goods Sold (COGS)
- Receivables Turnover
- Total Receivables
- Payables Turnover
- Total Payables
- Budget Variance
- Budgeted Expenses
- Sales Growth
- Actual Expenses
- Inventory Turnover
- Inventory Value
- Employee Work Center Loading
- Employee Scheduled Time
- Employee Available Time
- Machine Work Center Loading
- Machine Scheduled Time
- Machine Available Time
- Expense Account Transactions
- Expense Account Debit Transactions
- Expense Account Credit Transactions